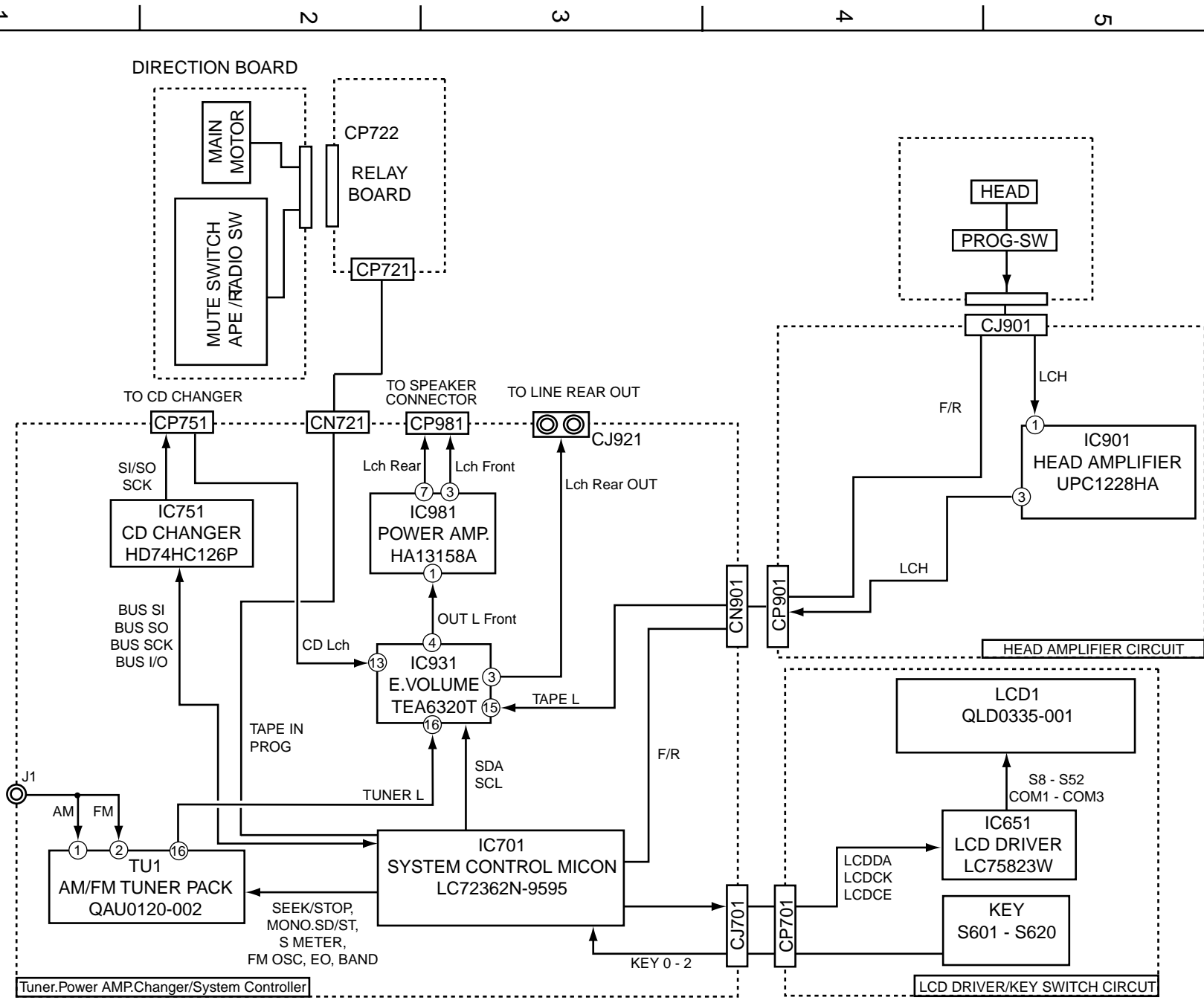


# Block Diagram



**< MEMO >**

# Standard schematic diagrams

## Receiver & System control circuit section

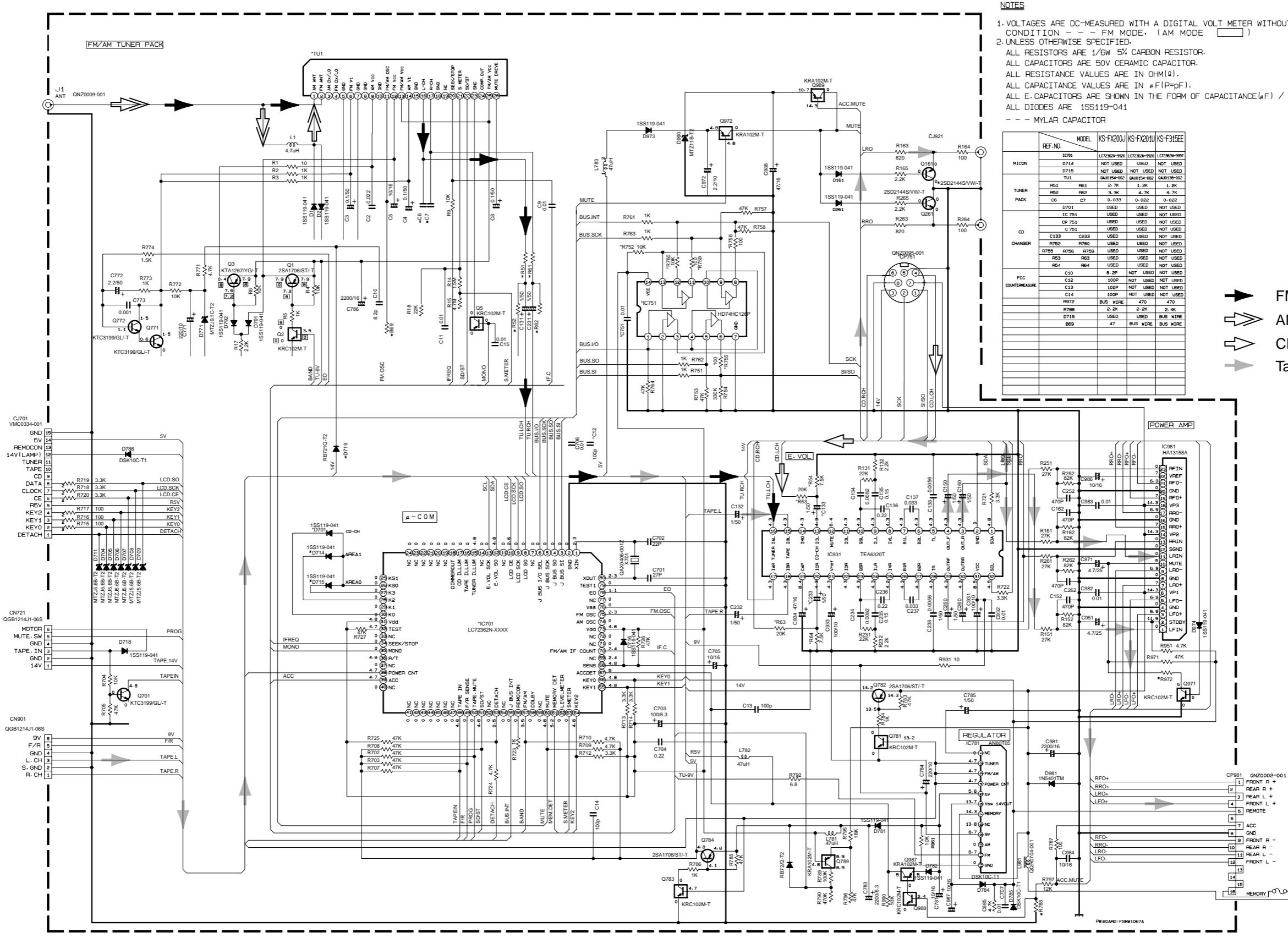
5

4

3

2

1



**NOTES**

- VOLTAGES ARE DC-MEASURED WITH A DIGITAL VOLT METER WITHOUT INPUT SIGNAL. CONDITION - - - FM MODE. (AM MODE )
- UNLESS OTHERWISE SPECIFIED:  
 ALL RESISTORS ARE 1/8W 5% CARBON RESISTOR.  
 ALL CAPACITORS ARE 50V CERAMIC CAPACITOR.  
 ALL RESISTANCE VALUES ARE IN OHM(Ω).  
 ALL CAPACITANCE VALUES ARE IN μF(P=pF).  
 ALL E-CAPACITORS ARE SHOWN IN THE FORM OF CAPACITANCE(V) / RATED VOLTAGE(V).  
 ALL DIODES ARE 1SS119-041  
 - - - MYLAR CAPACITOR

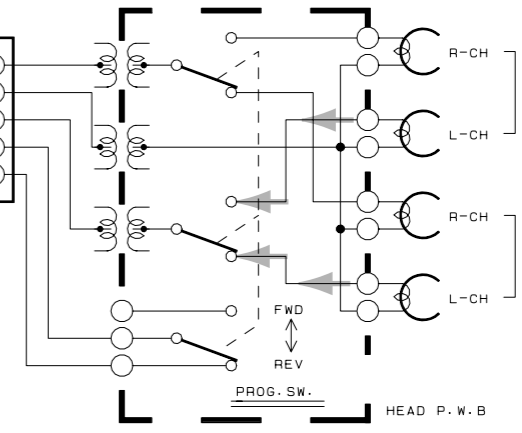
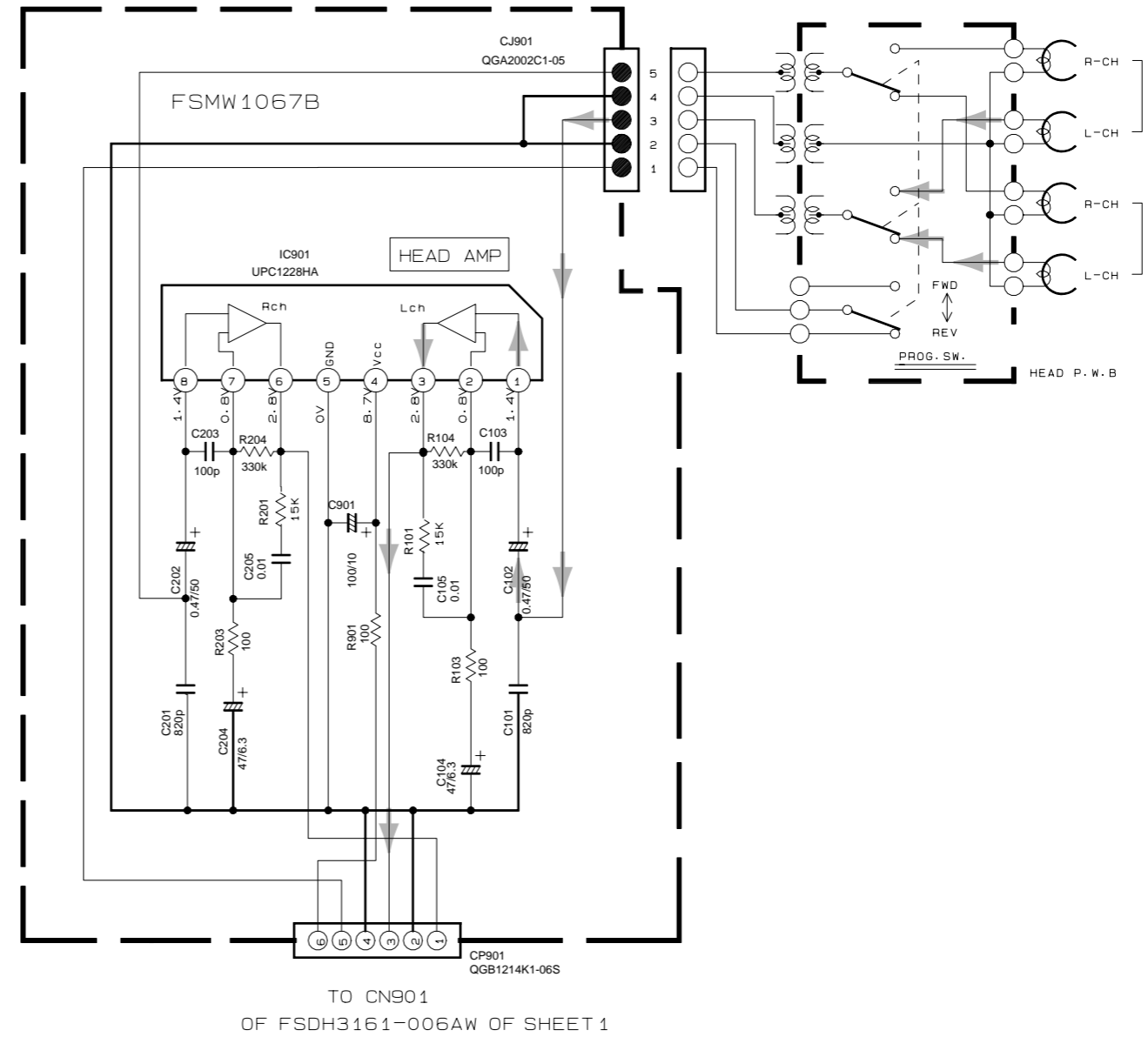
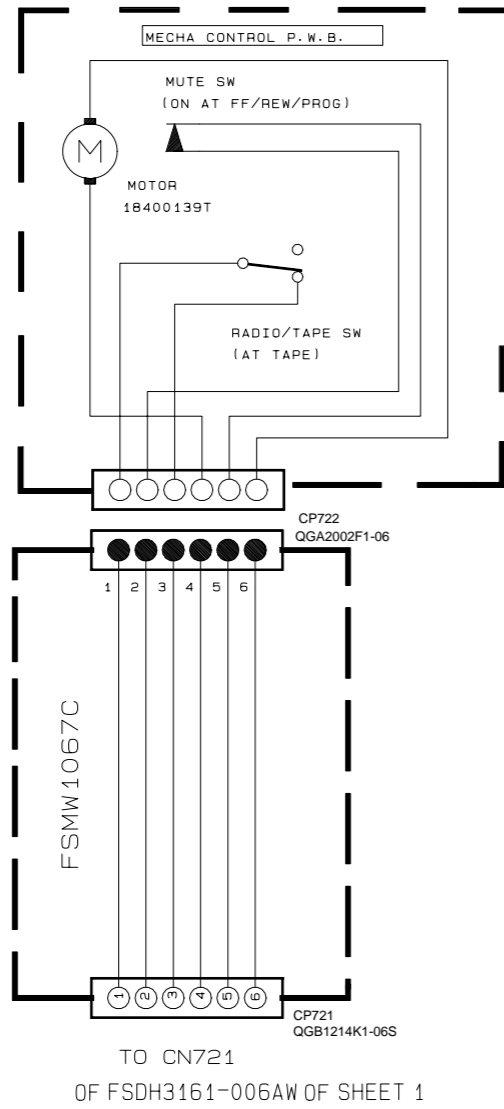
REF. NO.	MODEL	KS-FX200U	KS-FX201U	KS-F315EE
<b>MICRON</b>				
D714	LCT2362N-980	USED	NOT USED	NOT USED
D715	NOT USED	NOT USED	NOT USED	NOT USED
TU1	GAU0154-002	GAU0154-002	GAU0154-002	GAU0154-002
<b>TUNER PACK</b>				
R61	R61	2.7K	1.2K	1.2K
R62	R62	3.3K	4.7K	4.7K
C6	C7	0.033	0.032	0.032
D701	USED	USED	NOT USED	NOT USED
IC 701	USED	USED	NOT USED	NOT USED
CP 701	USED	USED	NOT USED	NOT USED
<b>CD CHANGER</b>				
C133	C233	USED	USED	NOT USED
R750	R750	USED	USED	NOT USED
R755	R756	USED	USED	NOT USED
R63	R63	USED	USED	NOT USED
R64	R64	USED	USED	NOT USED
<b>FOC COMPENSATOR</b>				
C10	8.2P	NOT USED	NOT USED	NOT USED
C12	100P	NOT USED	NOT USED	NOT USED
C13	100P	NOT USED	NOT USED	NOT USED
C14	100P	NOT USED	NOT USED	NOT USED
R972	BUS WIRE	470	470	
R780	2.2K	2.2K	2.2K	
D719	USED	USED	BUS WIRE	NOT USED
B69	47	BUS WIRE	BUS WIRE	

- FM Radio signal
- AM Radio signal
- CD signal
- Tape PB/Main signal

NOTE: /s/C/es/3161ma.001  
 KS-FX200J/KS-F315EE/KS-FX201USERIES  
 FSDH3161-006AW 1/3

Head amplifier circuit section

5  
4  
3  
2  
1



➔ Tape PB/Main signal

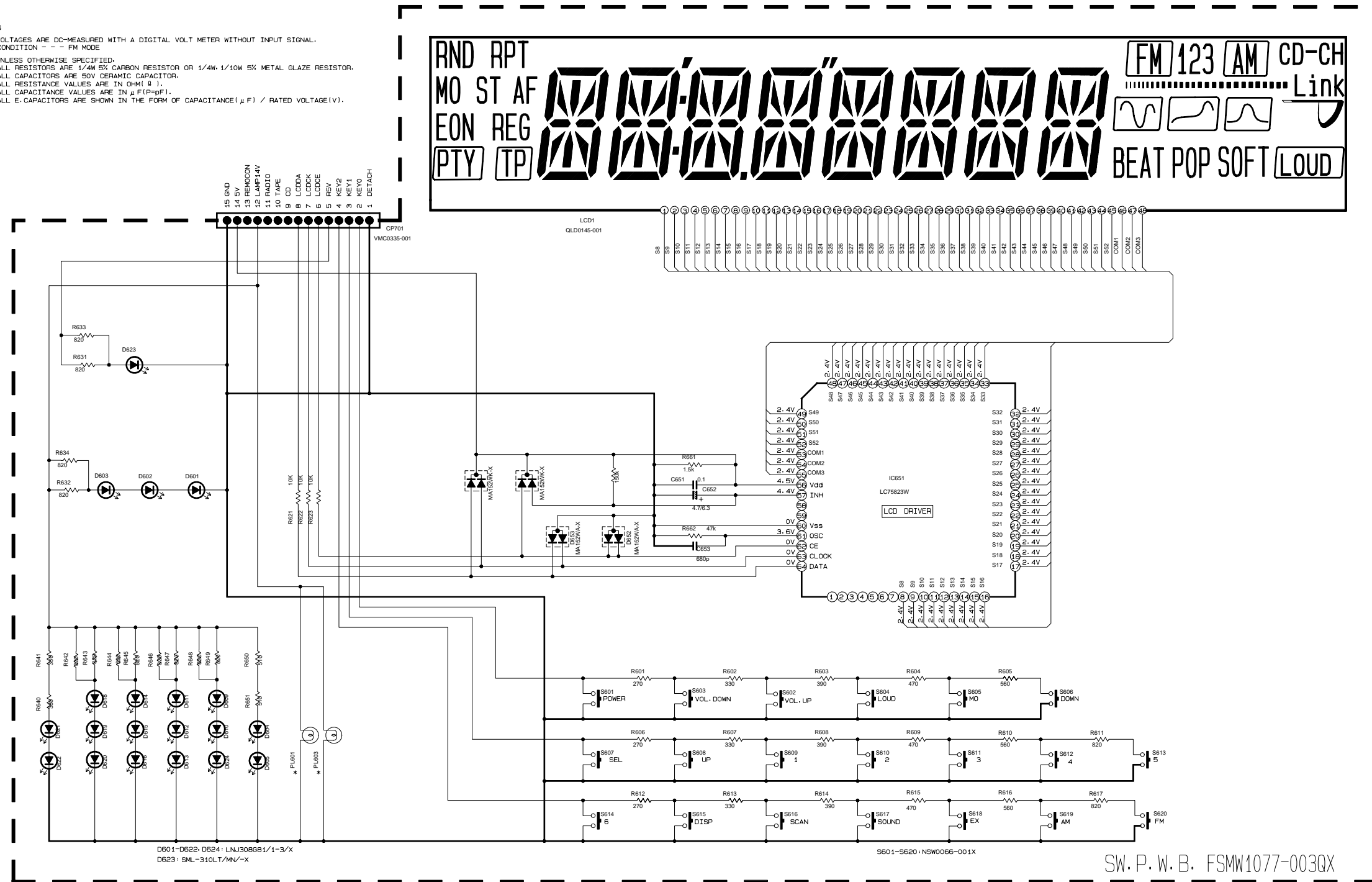
NOTE/s/C/jea/3161me.001  
 KS-FX200JKS-F315EEIKS-FX201USERIES  
 FSDH3161-006MW 2/3

A B C 2-4 D E F G H

■ LCD driver & Operation switch circuit section

NOTES

1. VOLTAGES ARE DC-MEASURED WITH A DIGITAL VOLT METER WITHOUT INPUT SIGNAL. CONDITION - - - FM MODE
2. UNLESS OTHERWISE SPECIFIED:  
 ALL RESISTORS ARE 1/4W 5% CARBON RESISTOR OR 1/4W-1/10W 5% METAL GLAZE RESISTOR.  
 ALL CAPACITORS ARE 50V CERAMIC CAPACITOR.  
 ALL RESISTANCE VALUES ARE IN OHM(Ω).  
 ALL CAPACITANCE VALUES ARE IN μF(PμF).  
 ALL E. CAPACITORS ARE SHOWN IN THE FORM OF CAPACITANCE(μF) / RATED VOLTAGE(V).



SW. P. W. B. FSMW1077-003QX

Version	KS-FX200J/F315EE	KS-FX201U SERIES	MODEL NAME	SWITCH-BOARD
Ref No.	QLL0070-001	QLL0092-001	KS-FX200J/F315EE	KS-SWPCB-6
PL601 PL603			KS-FX201U SERIES	KS-SWPCB-7

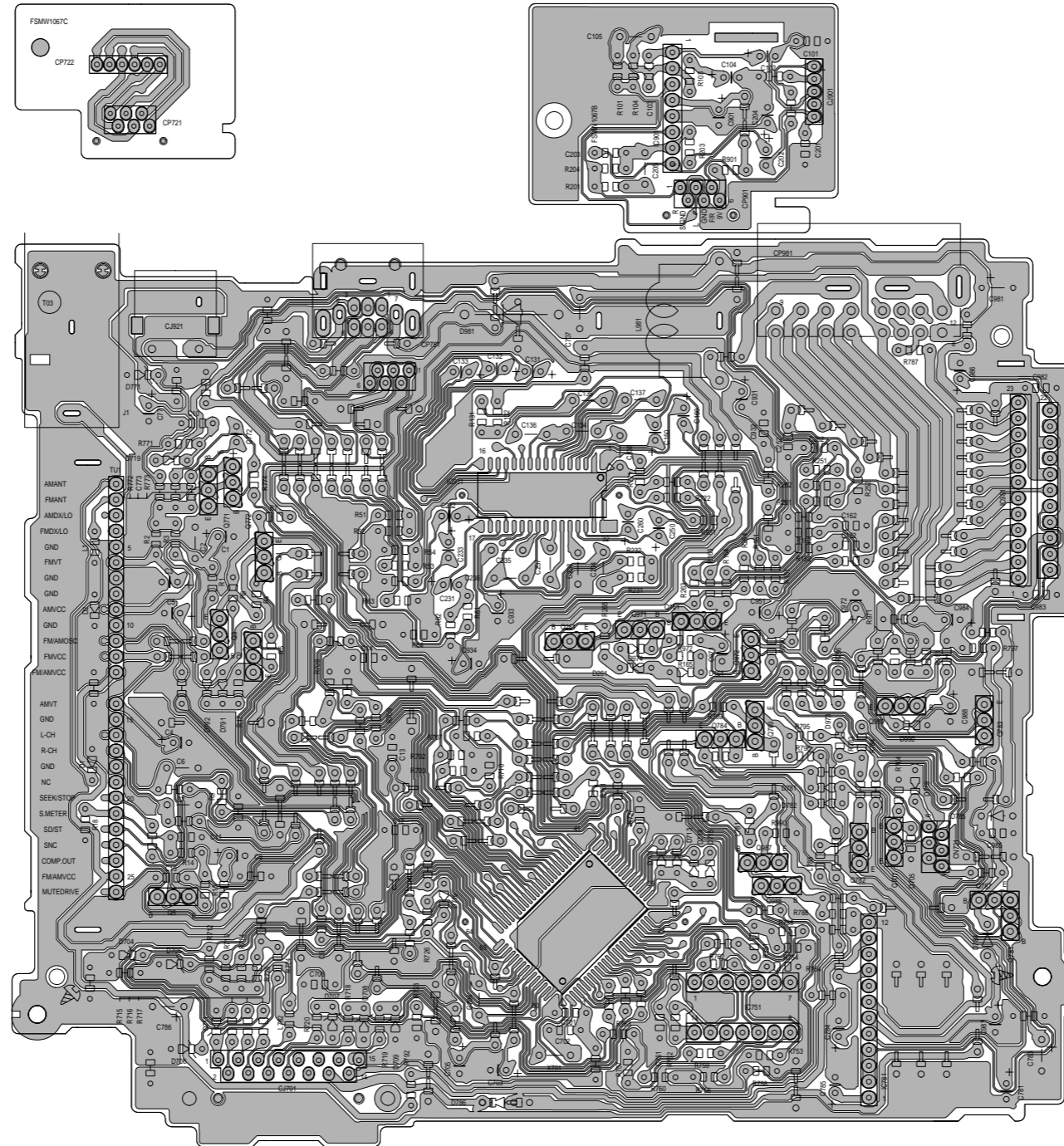
NOTE/S/C/je/3211sw.001  
 KS-FX200J/201U SERIES KS-F315EE  
 FSDH3161-006 3/3

5  
4  
3  
2  
1

# Printed circuit boards

■ Main boards

5  
4  
3  
2  
1



NOTE:KS-FX200J,KS-FX201 FSMW1067-0203  
/d2/c/jea/1067ma/1067mo

A | B | C | 2-6 | D | E | F | G | H

